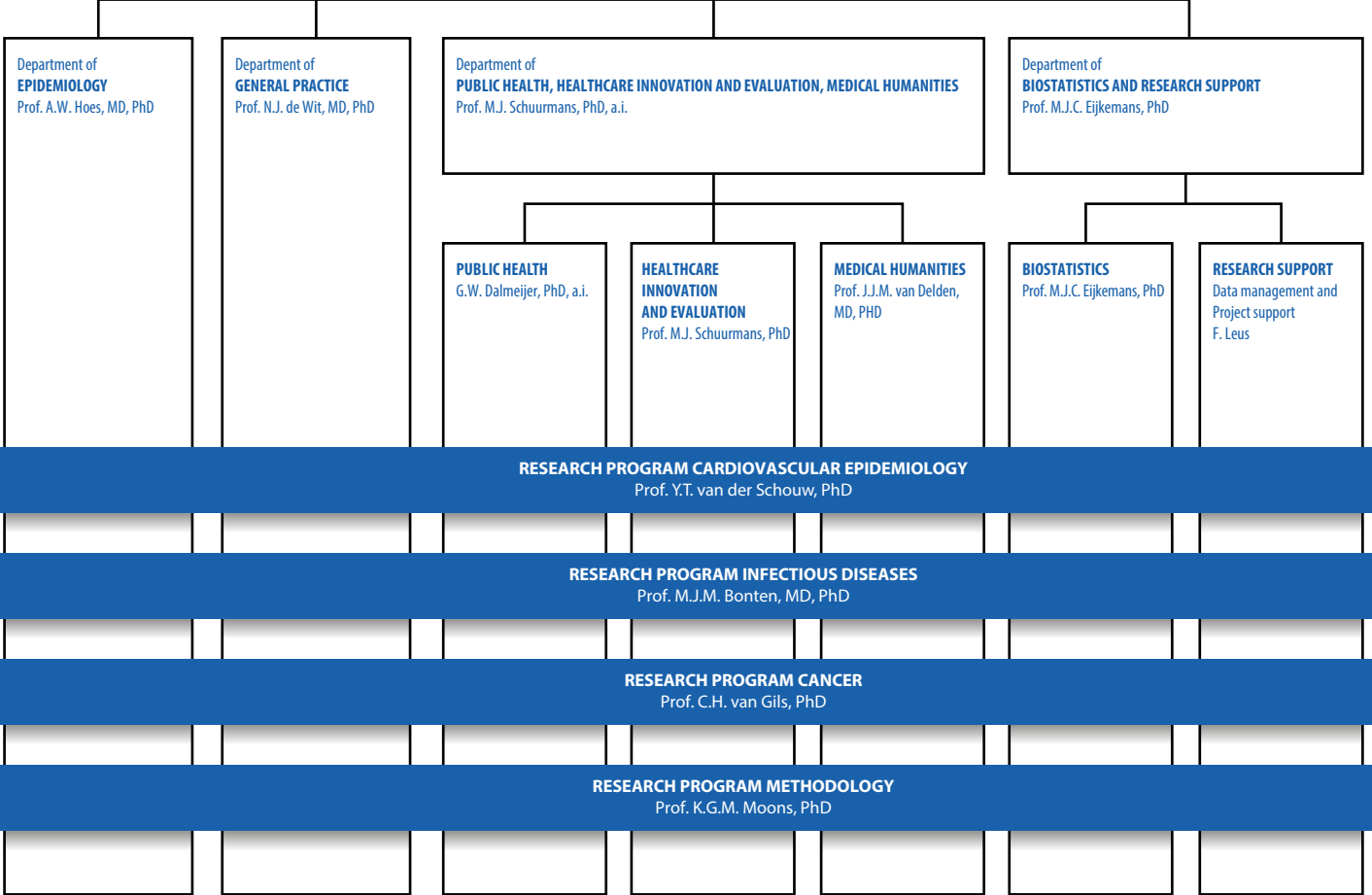




BOARD OF DIRECTORS

Prof. A.W. Hoes, MD, PhD, *chair*
 Prof. J.J.M. van Delden, MD, PhD, *director of education*
 Prof. K.G.M. Moons, PhD, *director of research*
 E.W.G. van Geenen, PhD, *director of business operations*

BUSINESS OPERATIONS
 E.W.G. van Geenen, PhD



Department of
EPIDEMIOLOGY
 Prof. A.W. Hoes, MD, PhD

Department of
GENERAL PRACTICE
 Prof. N.J. de Wit, MD, PhD

Department of
PUBLIC HEALTH, HEALTHCARE INNOVATION AND EVALUATION, MEDICAL HUMANITIES
 Prof. M.J. Schuurmans, PhD, a.i.

Department of
BIOSTATISTICS AND RESEARCH SUPPORT
 Prof. M.J.C. Eijkemans, PhD

PUBLIC HEALTH
 G.W. Dalmeijer, PhD, a.i.

HEALTHCARE INNOVATION AND EVALUATION
 Prof. M.J. Schuurmans, PhD

MEDICAL HUMANITIES
 Prof. J.J.M. van Delden, MD, PHD

BIOSTATISTICS
 Prof. M.J.C. Eijkemans, PhD

RESEARCH SUPPORT
 Data management and Project support
 F. Leus

RESEARCH PROGRAM CARDIOVASCULAR EPIDEMIOLOGY
 Prof. Y.T. van der Schouw, PhD

RESEARCH PROGRAM INFECTIOUS DISEASES
 Prof. M.J.M. Bonten, MD, PhD

RESEARCH PROGRAM CANCER
 Prof. C.H. van Gils, PhD

RESEARCH PROGRAM METHODOLOGY
 Prof. K.G.M. Moons, PhD





DIVISIELEIDING
Prof. dr. A.W. Hoes, *voorzitter*
Prof. dr. J.J.M. van Delden, *manager onderwijs*
Prof. dr. K.G.M. Moons, *manager onderzoek*
Dr. E.W.G. van Geenen, *manager bedrijfsvoering*

BEDRIJFSVOERING
Dr. E.W.G. van Geenen

